

**ROLAND
MACHINERY CO.**

Industry Scoop

KOMATSU®



A publication for and about Roland Machinery Co. customers • www.RolandIndustryScoop.com • January 2021



Emery Sapp & Sons

Scott Zepp,
Equipment Director

Smart Construction

Tech solutions increase efficiencies, production during site prep at Komatsu's new global mining headquarters



Scott Christman,
Earthwork Division Manager,
CornerStone One, LLC



Kevin Hokanson,
Vice President - Operations,
A.W. Oakes & Son, Inc.

A Message from the President



Matthew L. Roland



Dear Valued Customer:

This has certainly been an interesting year. While it would be easy to dwell on the negative, we choose to look forward with great optimism.

What will normal look like in the construction industry going forward? We learned during the past few months that technology can play a big role in maintaining productivity. Remote meetings helped us realize we can get things done even when we are not physically together. That means owners, contractors, subcontractors and other project stakeholders can review plans and share progress updates from their own locations without gathering on site.

That's just one more way that technology is playing an ever-increasing role in construction. During the past decade, equipment has become more advanced with integrated GPS systems and remote monitoring of systems and production that help owners and operators manage their machinery.

Komatsu has been at the forefront of this movement and is upping the ante with Smart Construction that goes beyond the machine and digitally transforms your job site. It delivers solutions for everything from pre-bid to project completion and from 3D designs of plans to cost-effective project management that includes cost tracking.

A Smart Construction job site is currently underway at Komatsu's future global mining headquarters. In this issue of your Roland Industry Scoop magazine, learn how the contractors moving dirt and digging trenches on the project are using technology to save time as well as material and labor costs.

There are also interesting articles on topics such as protecting yourself on future contracts and more. I believe you will find them informative when planning for the next evolution in your business. Here's to 2021!

As always, if there's anything we can do for you, please call one of our branch locations.

Sincerely,
Roland Machinery Co.

A handwritten signature in black ink, appearing to read 'M. Roland', written in a cursive style.

Matthew L. Roland
President

**Technology
takes center
stage**



In this issue

Pilot Project pg. 4

Read how Roland Machinery's customers are using Smart Construction solutions to facilitate teamwork at Komatsu's future global mining headquarters in Wisconsin.

Emery Sapp & Sons pg. 10

Discover how this employee-owned company emphasizes growth through efficiency.

Guest Opinion pg. 13

Find out why one innovation expert advocates for an accelerated use of digital ways of working.

A Closer Look pg. 14

Understand the importance of specific contract language that covers unforeseen events.

Customer Success Story pg. 17

See the savings that one water and sewer contractor realized thanks to an intelligent Machine Control excavator.

Machine Spotlight pg. 19

Take a look at the variety of applications in which Komatsu's ZT44 surface drill excels.

Industry First pg. 21

Check out the recent milestone for Komatsu's Autonomous Haulage System, which helps mines around the world move material more efficiently.

Career Corner pg. 22

Get to know Wyatt Larson, a young heavy-equipment operator, who is living out his dream to follow in the footsteps of several family members.

Komatsu & You pg. 24

Meet Komatsu's Tom Suess, Director of National Accounts, who focuses on developing long-term relationships with customers.

Industry News pg. 27

Examine the impact that extended funding for a surface transportation bill may have on future road and bridge projects.



www.rolandmachinery.com

KOMATSU®

Published for Roland Machinery Co.
© 2020 Construction Publications, Inc.
Printed in the USA.

CORPORATE OFFICE

Raymond E. Roland, CEO
Matthew L. Roland, President
Dan Smith, VP, Product Support
Mike Brunson, General Manager,
Allied Product Support
Jay Germann, General Manager, Used Equipment

SPRINGFIELD DIVISION

Chris Ingram, General Manager

East Peoria, IL (309) 694-3764
4299 N. Main St., Unit A

Springfield, IL (217) 789-7711
816 North Dirksen Pkwy.

CHICAGO DIVISION

Mike McNamara, Vice President/General Manager

Bolingbrook, IL (630) 739-7474
220 East Frontage Rd.

Marengo, IL (815) 923-4966
18210 Beck Rd.

Portage, IN (219) 764-8080
6450 Melton Rd.

WISCONSIN DIVISION

Larry Gindville, Vice President/General Manager

De Pere, WI (920) 532-0165
3275 French Rd.

DeForest, WI (608) 842-4151
604 Stokely Rd.

Eau Claire, WI (715) 874-5400
7417 Margaret Lane

Franksville, WI (262) 835-2710
3540 Ten Point Lane

Schofield, WI (715) 355-9898
9808 Weston Ave.

Slinger, WI (262) 644-7500
881 E Commerce Blvd.

Escanaba, MI (906) 786-6920
2600 South Lincoln Rd.

ST. LOUIS DIVISION

James Jesuit, Vice President/General Manager

Bridgeton, MO (314) 291-1330
4670 Crossroads Industrial Dr.

Cape Girardeau, MO (573) 334-5252
3364 Percy Dr.

Columbia, MO (573) 814-0083
4110 I-70 Drive South East

Palmyra, MO (573) 769-2056
701 Industrial Dr.

Carterville, IL (618) 985-3399
1505 Donna Dr.

Smart Construction increases efficiencies, production during site prep for Komatsu's new global mining headquarters



Jason Anetsberger,
Komatsu Director,
Customer Solutions



Andie Rodenkirch,
Senior Project
Manager,
Hunzinger Construction
Company

If you want to ensure new ideas and technology work as planned, you need to put theory into practice. Komatsu is doing just that by partnering with three contractors to pilot specific aspects of Smart Construction, its suite of solutions designed to digitally transform job sites.

General contractor Hunzinger Construction Company, and subcontractors CornerStone One, LLC and A.W. Oakes & Son, Inc. are putting Smart Construction Remote and Dashboard solutions to the test during site work for Komatsu's new global mining headquarters in Milwaukee's Harbor District. By all accounts, the pilot has been a success.

"Smart Construction is a mix of hardware and digital solutions as well as human-derived services," explained Jason Anetsberger, Komatsu Director, Customer Solutions. "The latter involves Komatsu's personnel out in the field collecting feedback and knowledge from job sites. Our goal is to redeploy that information to our customers, who can use it to positively affect practices."

Hunzinger Construction Company Senior Project Manager Andie Rodenkirch said that's already happened at the Milwaukee headquarters' site. With Smart Construction Dashboard, Hunzinger utilizes drone flyovers to map the site and track progress. The

construction firm used data from those flights to adjust original cut/fill plans.

"We compared what we saw as existing grade to planned subgrades and found that there was a severe overage of fill not accounted for that would have to be hauled off site at a great expense," said Rodenkirch. "Using information from the drone flyovers, we were able to have the design team adjust the grading plan to balance out the site. Completing this adjustment will save time and labor by eliminating any rework, ultimately keeping us on schedule and on budget. Dashboard is a great tool to collect the information we need throughout all phases of the project, from design to practice to coordination with the owner – Komatsu in this case – and our subcontractors."

Bringing it all together

One Roland Machinery customer, CornerStone One, is digging the building foundations and installing site utilities, and another, A.W. Oakes & Son, Inc. is providing footing and mass excavation in addition to site grading. Along with Hunzinger, they are utilizing Smart Construction Dashboard and Remote. Both contractors are also moving materials with Komatsu PC360LCi-11 intelligent Machine Control (iMC) excavators, as well as iMC dozers, including D61PXi-24 models with factory-integrated GPS.

"Roland and our Sales Rep Aaron Strade helped us in the purchase of equipment, ensuring we had the right tools for the jobs we do," said Scott Christman, CornerStone One's Earthwork Division Manager. "The iMC excavators and dozers are the perfect machines for Smart Construction. In addition to Komatsu, Aaron and Roland have remained with us every step of the way as we implement the new technology. Anytime we need something, whether it's a question about iMC or parts and service, they respond quickly."

A.W. Oakes & Son, Inc. Vice President - Operations Kevin Hokanson similarly praised Roland and Strade for their support.

"Often when you add new technology, someone comes and sets it up, programs it and tells you to go use it," Hokanson said. "If you have a question or an issue pops up, no one is there to

"The amount of information (with Smart Construction) is a great advantage," stated Kevin Hokanson, Vice President - Operations for A.W. Oakes & Son, Inc. "You can take the data and transfer it to the machine, get data from the machines and bring it all together to utilize it across the board for estimating, bidding, project management, documentation, billing and more."





Earthmoving operations are handled with a mix of Komatsu intelligent Machine Control and standard equipment. "I can log in from anywhere I have internet access and see where we are at the moment in relation to target elevations, and updates can be done in minutes as opposed to hours or days, which is a huge savings in downtime," said Scott Christman, Earthwork Division Manager, CornerStone One, LLC.

SMARTCONSTRUCTION

This suite of solutions is designed to digitally transform your job site, including planning, management, schedule, costs and optimize processes remotely and in near real time.

Featured solutions:

Smart Construction Design – Go from rolled up paper plans to robust 3D designs and more with 3D data generation.

Smart Construction Remote – Send new design data to machines in the field or remotely support operators, without traveling to the job site.

Smart Construction Dashboard – Graphically visualize design, drone and machine data to measure cut/fills, quantities and productivity.

help you with it. Aaron, Roland and Komatsu partnered with us to not only make sure the technology worked, but also so we knew how to make the most of it. They continue to check in with us regularly and provide service as needed, which is something we have come to expect. They are knowledgeable about matching machines to our needs, then give outstanding service to back them up."

Digital 3D plans are utilized throughout the site by all three contractors. With Smart Construction Remote, changes can be sent directly to the excavators and dozers in near real time.

"I can log in from anywhere I have internet access and see where we are at the moment in relation to target elevations, and updates can be done in minutes as opposed to hours or days, which is a huge savings in downtime," said Christman. "Smart Construction increases our flexibility and agility because we're able

to switch tasks or start on a change quickly, without waiting for a third-party surveyor to come lay it out."

A.W. Oakes & Son, Inc. has long been a proponent of technology, including implementing GPS grading when it was first introduced in the construction industry. It adopted iMC equipment several years ago. Hokanson said Smart Construction takes the job site to another level.

"The amount of information is a great advantage," he said. "With Dashboard, we monitor progress, production and quantities almost constantly. Drone flyovers give an accurate picture of where we are in relation to the original design and the finished surfaces. You can take the data and transfer it to the machine; get data from the machines; and bring it all together to utilize it across the board for estimating, bidding, project management, documentation, billing and more."



Scott Christman,
Earthwork
Division Manager,
CornerStone One, LLC



Kevin Hokanson,
Vice President -
Operations,
A.W. Oakes & Son, Inc.



Discover more at
RolandIndustryScoop.com

Continued . . .

KOMATSU®

WORKS FOR ME™



**“WE’RE NOT A BIG COMPANY,
BUT KOMATSU TREATS US
LIKE WE ARE.”**

BETTER SUPPORT.

“My cousin Thomas and I started our construction company on a wing and a prayer. We couldn’t have done it without the financing, training, tech assistance and support we received from Komatsu and our distributor. The products are top quality. They make us efficient at our job, and feel connected—like they want to be our partner in this. That’s why Komatsu works for us!”

Brian (left) and Thomas Cronin / Prosperity Construction / Jackson, MS

KOMATSU®

THAT’S WHY I AM KOMATSU

komatsuamerica.com



Technology facilitates teamwork

... continued

More solutions coming soon

Anetsberger added that during the next year Komatsu will roll out additional Smart Construction solutions designed to optimize fleets, track productivity and progress across multiple projects and much more.

"The technology really highlights the connection between Komatsu as the owner, Hunzinger as the GC and CornerStone and A.W. Oakes & Son, Inc. as the subs," said Anetsberger. "Work done by CornerStone and Oakes is measured digitally and fed into the Smart Construction ecosystem, so Hunzinger always has an accurate picture of current

Continued . . .



With Smart Construction Remote, contractors can see the site and where their intelligent Machine Control dozers and excavators are working in near real time. Updated design data can be sent directly to the machines from off-site locations via GPS.

Yoetzin Diaz finds satisfaction in helping customers transform job sites with Smart Construction solutions

As a project manager for a general contractor Yoetzin Diaz focused on improving job site efficiency and production. During her four years in the position, she took a keen interest in how technology could play a vital role.

"I really wanted to explore what it could do, and I knew Komatsu was leading the way," recalled Diaz. "Fortunately, they hired me as a Smart Construction Solutions Manager. I love that it allows me to help customers optimize their job sites with proven technology."

From pre-bid through completion, Smart Construction provides solutions to your operations with digital technology. It is designed to help contractors most effectively use equipment and technology in planning, management, scheduling, tracking and more.

Komatsu is currently piloting its Smart Construction Dashboard, Remote and other coming solutions with three contractors at the site of its new global mining headquarters. Diaz has flown a drone over the site numerous times to collect updated cut/fill data, overall progress and production.

"We're able to verify material quantities to ensure accuracy and work together to make any necessary changes very quickly as opposed to the old days of relying on load counts and change orders that may take days to get answers to," said Diaz. "It's improving productivity and saving customers time, labor and costs. As an example, if there is a plan change, they can send the file directly to one of their intelligent Machine Control dozers or excavators without leaving the office and driving to the job site. The update is made almost instantaneously, so the operator can keep moving and not have to wait on a surveyor to come do a new layout and restake."

Diaz and other members of the Smart Construction team collaborated to set up the Komatsu global mining headquarters site and provide training to ensure the contractors understood the full benefits of the technology.

"There was a lot of planning and discussion, and we all agreed on what the pain points were and how Smart Construction technology could alleviate them," said Diaz. "That's what it's all about. We are not only utilizing technology, but also leveraging the knowledge of experts across different industries to make Smart Construction the industry standard for job site solutions." ■

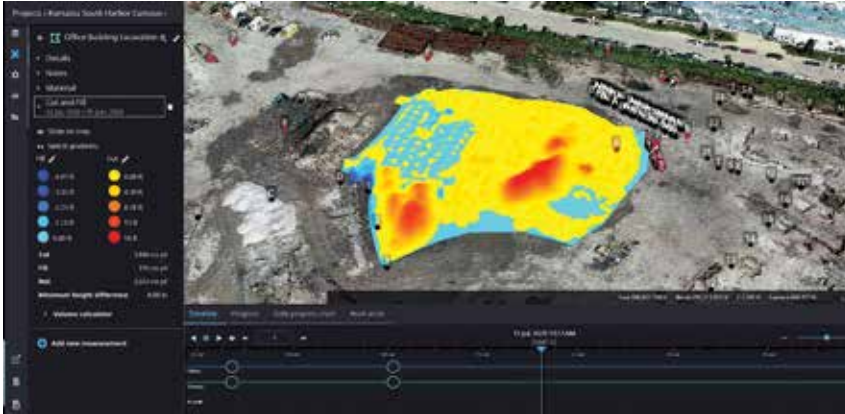


Komatsu Smart Construction Solutions Manager Yoetzin Diaz prepares to fly a drone over the site of the company's new global mining headquarters. "We're able to verify material quantities to ensure accuracy and work together to make any necessary changes very quickly as opposed to the old days of relying on load counts and change orders that may take days to get answers to," said Diaz.

'We are more productive with gathering information'

... continued

production to plan overall site operations accordingly. As an owner, the benefit is knowing where the project stands in terms of schedule and budget at any time. It's paying huge dividends for all involved."



Smart Construction Dashboard lets users graphically visualize data with relation to cut/fill, quantities and productivity. "As a general contractor, the detailed information is extremely valuable as we make decisions and coordinate with subs during construction. It's more efficient and increases productivity," said Andie Rodenkirch, Senior Project Manager for Hunzinger Construction Company.

Hokanson concurred. "We are more productive with gathering information and being able to share it. When Komatsu or Hunzinger calls us about how long it's going to take to move dirt in a particular area, we can give them an accurate forecast in a relatively short time. Topographical photos taken during drone flights help in providing detailed progress data as we go."

Hunzinger Construction Company's Rodenkirch said that information helps in making faster decisions, saving time and cost.

"In most cases, I would send a question and wait for a response," explained Rodenkirch. "With everyone using Smart Construction, we get answers faster, almost immediately in some instances, saving valuable time."

Christman said he sees the benefits now, as well as for upcoming projects. "In the future, CornerStone will use Smart Construction wherever possible. It's proven to give us advantages in production and efficiency, and I envision being able to utilize it on large underground projects across multiple divisions in our company." ■

Contractors save time, material costs with intelligent Machine Control

Contractors using Komatsu intelligent Machine Control (iMC) equipment with factory-integrated GPS machine control technology that requires no masts or cables are handling site work at Komatsu's future new global mining headquarters in Milwaukee, Wis. Plans are uploaded to the machines, and changes can be sent directly from the office via GPS.

"You just turn the machine control on and let the equipment do the work," said CornerStone One, LLC Earthwork Division Manager Scott Christman. The company is subcontracting footing excavation and utility installation. "We are using PC360LCi-11 excavators to perform trench digs. With iMC, you can put them right to grade, and once you reach target elevation, it prevents you from overexcavating. You save time on trucking, material, backfill, you name it."

CornerStone One uses a D51PXi-24 to backfill and spread material. "Whether they are cutting grade or pushing backfill, there is no confusion about where the dozer is in relation to final grade at any time," said Christman. "Operators have much better control over placing consistent lifts."

A.W. Oakes & Son, Inc. has used iMC equipment for several years and knew it would be the right choice for this project. It is utilizing a PC360LCi-11 for mass excavation and D61PXi-24 dozers for grading.

"These machines allow us to train new operators and make them proficient and faster. They love the technology," said Kevin Hokanson, Vice President - Operations at A.W. Oakes & Son, Inc. "It saves staking and restaking time and costs. For example, we did a project with an iMC excavator where we put in about 1,200 feet of storm sewer and laterals without a plan in-hand. In addition to not allowing the operator to overdig once reaching the target elevation at the bottom of a trench, it's great for putting bedding materials down. You can put it right to the elevation you want, so all you need to do is put the pipe in place. ■



A CornerStone One, LLC operator digs with a Komatsu intelligent Machine Control (iMC) PC360LCi-11 excavator at Komatsu's future global mining headquarters. "With iMC, you can put them right to grade, and once you reach target elevation, it prevents you from overexcavating," said CornerStone One Earthwork Division Manager Scott Christman.



United. Inspired.

The whole range

For everything a driller needs, rely on Roland Machinery and Epiroc

www.rolandmachinery.com

Rigs | Hammers | Bits | Service

epiroc.us

Springfield, IL • (217) 789-7711
Carterville, IL • (618) 985-3399
Bridgeton, MO • (314) 291-1330
Cape Girardeau, MO • (573) 334-5252
Columbia, MO • (573) 814-0083
Palmyra, MO • (573) 769-2056



Boosting highway projects through technology proves a winning strategy for Missouri's Emery Sapp & Sons



Scott Zepp,
Equipment Director

For 47 years, Emery Sapp & Sons has performed heavy civil contracting jobs throughout Missouri, Arkansas, Oklahoma and Kansas. Today, the employee-owned company, based in Columbia, Mo., continues to grow and deliver for customers.

"We are a full-service civil contractor," explained Equipment Director Scott Zepp. "We can show up at a green field and turn it into a highway. Whatever it takes – milling, paving, site development, bridges, underground utilities – we can do it."

A lot of it, too. With 1,400 employee owners, Zepp notes that the workforce at Emery Sapp & Sons is one of its greatest strengths.

"We have a great staff here, and one thing that really makes us special is that we're employee-owned," he said. "We went to that model in 1999. Our people are very invested in our success because they have a stake in it."



Milling Superintendent Saban McCabe tracks the performance of Emery Sapp & Sons' new W 210 Fi milling machine. "We know exactly what we're doing and how much we're putting into the trucks."



We're all driving toward the same goal: make the company better and more profitable."

Emery Sapp & Sons splits its time between DOT and municipal work with a focus on paving, but also performs private custom services.

"We do everything up to vertical construction," he said. "While highway and road work make up a large percentage of our offerings, we also install underground utilities and handle site work. We even do driveways. We'll pretty much do anything except build buildings."

WIRTGEN and Roland

With an emphasis on growth and efficiency, Emery Sapp & Sons needs equipment that can help it maximize production. For that, it turns to Roland Machinery Company and Sales Rep Jerry Hess for WIRTGEN GROUP equipment.

"WIRTGEN makes a solid machine," shared Zepp. "They are well-engineered with lots of technology in them. Plus, with Roland backing them up, we are very happy. We have a long history with Roland; it's a good relationship."

Emery Sapp & Sons has four WIRTGEN milling machines, and the latest addition to the fleet is a WIRTGEN W 210 Fi. Delivered in early April, it was the first of WIRTGEN's new F-Series mills that Emery Sapp & Sons has purchased. With several new features and technological advances, the draw of the machine was its ability to accurately measure production and improve efficiency.

"One thing that really appealed to us was the WIRTGEN Performance Tracker (WPT) software," stated Zepp. "To have the ability to start building some history and have all of that data at our fingertips is exciting. It will allow us to develop our true cost of production. That will help us to make better decisions when it comes to making bids and have more control over our costs."

Proven performance

In the field, the W 210 Fi has delivered. On an eight-mile stretch of Highway 36 near Macon, Mo., the W 210 Fi was put to one of its first tests.



Emery Sapp & Sons' Operator Damon Dunlap uses a WIRTGEN W 210 Fi milling machine to mill an 8-mile stretch of Highway 36 near Macon, Mo. "It has more power, and I feel like it gets down the road faster. We mill hard material, but the W 210 still rides smooth."



"We performed half-inch milling with two-and-a-quarter-inch transitions," detailed Milling Superintendent Saban McCabe. "The W 210 made us about 25% faster compared to the machines we used to run. We milled 120 feet a minute on the project."

"It's very comfortable," added Operator Damon Dunlap. "It has more power, and I feel like it gets down the road faster. We mill hard material, but the W 210 still rides smooth."

"Another thing that is nice is the control panel," he continued. "It's set up in a way that makes sense. It makes my job easier."

The new technology has also performed up to expectations.

"The WPT system figures all our job site data in real time," noted McCabe. "We know exactly what we're doing and how much we're putting into the trucks. It is

a much better system than we had on the older mills."

"It eliminates any guessing" added Zepp. "We know exactly what our production is. We don't have to rely on an operator making an estimate. Plus, all of the information is a click away."

Continued growth

Looking ahead, Zepp says that the goal of the company is to continue to expand in order to feed to the operation.

"In addition to our customers, being employee-owned, we have 1,400 stockholders to provide value to," commented Zepp. "We're going to keep growing in every way that we can to keep everyone happy. It's something we've been able to do consistently, and we are positioned to keep doing that successfully for the foreseeable future." ■



Discover more at
RolandIndustryScoop.com

A JOHN DEERE COMPANY



WIRTGEN GROUP

Well Rounded.

► www.wirtgen-group.com/technologies



CLOSE TO OUR CUSTOMERS

ROAD AND MINERAL TECHNOLOGIES. With leading technologies from the WIRTGEN GROUP, you can handle all jobs in the road construction cycle optimally and economically: processing, mixing, paving, compacting and then rehabilitation. Put your trust in the WIRTGEN GROUP team with the strong product brands WIRTGEN, VÖGELE, HAMM, KLEEMANN.

WIRTGEN AMERICA, Inc. • 6030 Dana Way • Antioch, TN 37013 • Phone: (615) 501-0600 • Fax: (615) 501-0691
E-Mail: info.america@wirtgen-group.com

► www.wirtgen-group.com/america

WIRTGEN



VÖGELE



HAMM



KLEEMANN



www.rolandmachinery.com

Springfield, IL
(217) 789-7711

Bolingbrook, IL
(630) 739-7474

Carterville, IL
(618) 985-3399

East Peoria, IL
(309) 694-3764

Marengo, IL
(815) 923-4966

Portage, IN
(219) 764-8080

Escanaba, MI
(906) 786-6920

Bridgeton, MO
(314) 291-1330

Cape Girardeau, MO
(573) 334-5252

Columbia, MO
(573) 814-0083

Palmyra, MO
(573) 769-2056

DeForest, WI
(608) 842-4151

De Pere, WI
(920) 532-0165

Eau Claire, WI
(715) 874-5400

Franksville, WI
(262) 835-2710

Schofield, WI
(715) 355-9898

Slinger, WI
(262) 644-7500

We must make changes to become digitally resilient, starting by moving civil infrastructure projects to the cloud

More than 5.2 million Americans filed for unemployment in early April, bringing the total number of jobless claims to around 22 million during the early days of the COVID-19 pandemic.

One way we can soften the impact of a pandemic is to enable people to continue working and contributing to their families and the economy – all while adhering to social distancing directives. Moving civil infrastructure projects to the cloud is a simple step that companies and agencies can take to keep projects running, people working and the economy moving during this unprecedented crisis.

As one of the oldest industries in the world, the civil engineering and construction (E&C) sector has a reputation for lagging other industries when it comes to digitization and virtual design. Companies that embrace digital technologies to improve how they do business, rather than to ride the wave of digital transformation and keep pace with the competition, often fare much better with these initiatives.

I have firsthand experience of the power of digital transformation born out of the need to collaborate across a global organization, and the results have not only brought us closer to our colleagues but also to our clients.

All about the cloud

The coronavirus pandemic has accelerated the need to adopt digital ways of working and has made it clear that E&C cannot afford

to rest on the laurels of traditional ways of working to be satisfied with the occasional digital innovation. We must make changes quickly to become digitally resilient – and that starts with transitioning civil infrastructure projects from local servers to the cloud.

This simple step can keep civil infrastructure projects moving so they will be shovel-ready when recovery begins, helping to keep America working now and when the crisis subsides. E&C companies that are solidly on the path to digital transformation are uniquely positioned to bring their clients along on the journey, and it all starts with a cornerstone of digital resilience: the cloud.

It's time the industry stops perceiving the digital transformation as an experiment in competitiveness, and instead sees it as a necessity of resilience. The term "digital transformation" itself can have the impact of analysis paralysis – seeming to mean that everything in an organization must transform. Rather than trying to go digital all at once or in fragmented efforts, focus first on enabling virtual collaboration and digitizing civil infrastructure projects so we can keep working and keep the economy moving during the coronavirus pandemic. ■



Orla Pease,
Vice President of
Digital Innovation,
AECOM

Editor's note: Orla Pease is Vice President of Digital Innovation at AECOM, a fully integrated global infrastructure firm. This article is excerpted from a piece that originally appeared on SmartCitiesDive.com.



The coronavirus pandemic accelerated the need to adopt digital ways of working, according to Orla Pease, Vice President of Digital Innovation at AECOM. "We must make changes quickly to become digitally resilient – and that starts with transitioning civil infrastructure projects from local servers to the cloud," she wrote. "This simple step can keep civil infrastructure projects moving so they will be shovel-ready when recovery begins, helping to keep America working now and when the crisis subsides."

Before signing a contract, confirm language covers specific unforeseen events, such as pandemics, say legal experts

Force majeure: unforeseen circumstances that prevent someone from fulfilling a contract

After weeks or months of reviewing plans, estimating, bidding and negotiating with an owner, general contractor and or subcontractor, you have reached agreement on the scope of work and price. The next step – sign the contract. Before you do, legal experts recommend ensuring the contract contains language that protects you from a force majeure, which is an unforeseen circumstance that prevents you from fulfilling it. Experts point to the coronavirus pandemic as a specific example of such a situation.

“Those entering into new construction contracts should include custom language addressing the parties’ respective rights and responsibilities related to COVID-19,” advised David Blake, a partner with Seyfarth Shaw, in an article (COVID-19 Language for New Construction Contracts) appearing on GlobeSt.com. “Many articles and webinars have focused on how traditional contract clauses in existing contracts may respond to COVID-19 issues. The fit is not always clear.”

Questions to ask before signing on the dotted line

Protection clauses in construction contracts will change post-coronavirus, wrote Larry

Cook in a piece (Construction Contract Clauses Post-Pandemic) for TheLienZone.com, a website for Florida Construction Law Advisers. He indicated that contractors, owners and their legal advisers will closely review legal terms, like force majeure, once buried in fine print. Cook added that contractors must be specific and clear in their contract language when defining scope and effect of a force majeure clause to protect themselves from unexpected liabilities.

“Before signing that new contract, consider several questions,” Cook advised. “What events are considered force majeure? Who is responsible for suspending performance? Who can invoke the clause? Which contractual obligations are covered by the clause? How should the parties determine whether the event creates an inability to perform? What happens if the force majeure event continues for more than a specified period?”

“An effective force majeure clause should specifically include any delay, disruption or suspension of work due to illness, quarantines, closures, government stay-at-home orders and other restrictions, including both owner and contractor directives as well as municipal and government orders,” said Cook. “And the result should not only be an extension of time but also an equitable adjustment to the contract price. Finally, such measures should preclude or forgive the assessment of damages, including liquidated damages.”

Satisfying three specific criteria to pass the ‘test’

The law firm of Shearman & Sterling noted in an informational piece (COVID-19: Force Majeure Event?) on the Perspectives page of its website, “As with all matters dependent upon the terms of the contract, each force majeure provision must necessarily be considered on its precise terms and its specific context. There are some features common to most force majeure provisions ...”

Shearman & Sterling noted that the “test” for force majeure usually requires the satisfaction of three distinct criteria: the event must be beyond the reasonable control of the affected party; the affected party’s ability to perform its obligations under the contract must have

Legal experts recommend a careful examination of force majeure clauses in construction contracts to ensure you’re covered for unforeseen circumstances, such as a pandemic, that may delay your ability to perform work.





Just as you study plans extensively to ensure you have included everything when estimating and bidding, carefully consider contracts for language that protects you in the event of a force majeure, or unforeseen circumstance, that prevents you from fulfilling obligations.

been prevented, impeded or hindered by the event; and the affected party must have taken all reasonable steps to seek to avoid or mitigate the event or its consequences.

In a Bloomberg Law article (INSIGHT: Coronavirus Advice for Construction Contractor Clients), Judah Lifschitz and Laura C. Fraher with the firm Shapiro, Lifschitz and Schram, said many construction contracts include provisions that allow for the suspension of work and/or termination of a project by the owner and/or the contractor.

“It is also critical that contractors analyze the contract to determine what rights they will have in the event a project is suspended for any length of time,” according to Lifschitz and Fraher. “There is always the possibility that a project could be suspended either by the owner or as mandated by the government, and the contractor will want to know what its rights and obligations are if a project is suspended indefinitely.”

Contract tips

There are some general considerations and best practices when drafting force majeure notices, according to a piece (Best Practice

with Notices for Force Majeure Events), published on jdsupra.com by Troutman Pepper of the firm Pepper Hamilton LLP. General considerations include objectives, contract terms, understanding the impacts that caused the force majeure event, the business relationship and potential for litigation.

“When issuing either a force majeure notice or more general notice of delay, there are a few practical concepts to keep in mind regarding what form the notice should take,” noted Pepper. He lists tips to ensure your notice is proper and serves its intended purpose. They are: comply with the contract terms; if impossible, then substantially comply; and keep and maintain documentation of all notice of activities.

Pepper added that when invoking force majeure, you should include some specific points that help ensure your “notice will constitute valid notice under your contract.” They include identifying the force majeure event; explaining how it impacts performance; identifying the relief the notice seeks, including adequate assurances; not limiting rights; and supplementing as more information becomes available. ■

Editor’s note: This article is for informational purposes about a topic relevant to today’s construction industry. It is not meant to be all encompassing or offer specific legal advice. Consult your legal professional if you need information about your specific contract.

KOMATSU®

WORKS FOR ME™

**"WE PUSH EVERYTHING
TO THE LIMITS."**

MORE RELIABLE.

"How does Komatsu work for our construction business? First it's their reliable, quality designed and built equipment. We can't afford downtime, and Komatsu's products are number one in our book. The support we receive from our dealer is outstanding as well. Training, parts, financing—we have experienced the best personal care with Komatsu. They just work best for us!"

Hunter and Clint Shackelford
Shackelford Construction / Yazoo City, MS

KOMATSU®
THAT'S WHY I AM KOMATSU

komatsuamerica.com

Water and sewer firm trims costs with iMC excavator that reaches target depths faster, with less labor

As an owner in his family's multi-generational business, it would appear to most that Lee Meyer's future was already set. That was until he purchased a specialty water and sewer company and set off on his own path.

"We partnered with the company on some jobs, and I knew they did good work," recalled Meyer. "When I heard there was an opportunity to buy it, I jumped on it."

Meyer bought the business in 2014, changed its name to PWS and began expanding. While specialized water and sewer projects remain the primary focus, the operation introduced other services, such as excavation and demolition that Meyer carried over from his previous work.

As he began to secure contracts, Meyer knew that finding more efficient methods would improve PWS' competitiveness and profitability. Upgrading his fleet to include additional GPS-equipped machines became part of the plan. PWS demoed a Komatsu intelligent Machine Control (iMC) PC360LCi-11 excavator with factory integrated GPS and acquired it immediately.

"We dug footings with it," detailed Meyer. "We had a number we wanted to hit, and we crushed it, digging 2,000 feet in one day with an operator who didn't have a ton of experience. We were going so fast that the concrete guys behind us could not keep up. They actually asked us to slow down. We knew at that point we had to have the excavator in our arsenal, so we bought it."

More aggressive bidding

Like all iMC excavators, PWS' PC360LCi-11 features Auto Grade Assist. As the operator moves the arm, the boom automatically adjusts the bucket height to trace the target surface and minimize the chance of digging too deep. Auto Stop Control halts the working equipment when the bucket edge reaches the design surface.

"The excavator is set up so you can't overdig," added PWS Vice President Rich Schmid. "The machine won't let you dig deeper than the target depth you set it to. The equipment cost per unit for performing our work is amazing; we see a higher proficiency in production with a lower equipment and labor cost factor. It allows us to be more aggressive in our bidding." ■



Lee Meyer,
President and CEO



Rich Schmid,
Vice President



Discover more at
RolandIndustryScoop.com

A PWS operator uses a Komatsu intelligent Machine Control PC360LCi-11 excavator to dig footings. "This excavator is set up so you can't overdig," said Vice President Rich Schmid. "The equipment cost per unit for performing our work is amazing; we see a higher proficiency in production with a lower equipment and labor cost factor. It allows us to be more aggressive in our bidding."





125HP HEAVY COMMERCIAL PAVER



EASY ACCESS FOR ROUTINE MAINTENANCE



NEW LEGEND HD PRO SCREED



PIVOTING, MULTI-POSITION SEATS

TRUST LEEBOY.

AS DEPENDABLE AS
YOUR DAY IS LONG.



www.LeeBoy.com

www.rolandmachinery.com

LeeBoy

Surface drill adjusts to changing conditions to achieve optimal performance in wider variety of your applications

Too often equipment is viewed as having only one function or being geared to a particular industry. Case in point are track drills, which are mainly associated with drilling blast holes in mining.

“The right drill can be a versatile tool in a variety of operations, especially those that perform multiple applications,” explained Matt Koss, Product Manager, Track Drills, Komatsu Mining Corporation. “You can use it for aggregate production one day, then put it on a project that requires drilling to dewater a construction site.”

Koss indicated that Komatsu’s new ZT44 fits that mold. “Its main function is to serve as a down-the-hole surface drilling rig for mining-duty applications. However, with a relatively small footprint, it excels in quarry, aggregate and construction environments, too. Its low center of gravity gives it excellent stability, so your operators can be confident on nearly all types of ground, including climbing hills.”

Koss added that the dual-pressure compressor enables high- and low-pressure drilling and can efficiently adjust to changing conditions to achieve optimal performance. In hard rock it provides up to 500 psi at 1,160 cubic feet per minute. In most applications, it delivers 350 psi at 1,360 cubic feet per minute. The ZT44 drills up to 20 feet in a single pass and as deep as 140 feet total. The onboard carousel holds up to six pipe extensions.

Built for longevity

Whatever the task at hand, the ZT44 was built to keep projects moving with minimal downtime, according to Koss. The drill features a robust structure for key component longevity.

“Target life is 40,000 hours, consistent with industry standards,” said Koss. “In addition to the compressor, it has a sturdy power unit and a best-in-class heat exchanger that mitigates high thermal loads during drilling. A second cooler keeps hydraulic temperatures at an optimum working state, to dedicate more time to the task.”

For maintenance, personnel can remotely position the rig and the boom or mast to efficiently change out consumables. An external

catwalk and handrails provide accessibility around the machine for routine service. The internal walkway through the canopy gives access to the internal componentry, such as the engine and compressor.

“Reduced mean time to repair was essential to the ZT44’s design,” said Koss, “So was comfort. An operator can fully stand in the spacious cab; the seat is adjustable, and it has an operator assist function. It’s very ergonomic, so an operator remains comfortable and productive throughout the shift, no matter the drilling application.” ■



Matt Koss,
Product Manager,
Track Drills, Komatsu
Mining Corporation

Quick Specs on Komatsu’s ZT44 Surface Drill

Horsepower	Operating Weight	Hole Size	Air System
800 hp	80,000 lb	4.5 to 8.5 in	HP mode: 1,160 cfm @500 psi LP mode: 1,360 cfm @350 psi

Komatsu designed the ZT44 for mining-duty applications, but with a small footprint, the ZT44 also excels in quarry, aggregate and construction environments, according to Matt Koss, Product Manager, Track Drills, Komatsu Mining Corporation. “Its low center of gravity gives it excellent stability, so operators can be confident on nearly all types of ground, including climbing hills,” he said.



National parks receive Great American Outdoors Act funds

New legislation known as the Great American Outdoors Act provides nearly \$10 billion in funding in the next five years for infrastructure maintenance in U.S. national parks and other federal land. The bill establishes a dedicated National Parks and Federal Land Legacy Restoration Fund that will be supported by revenue the government receives from

oil, gas and other energy production on federal lands.

The National Park Services will receive 70% of the annual total, about \$1.3 billion, with the U.S. Forest Service slated for 15%; and the Fish and the Wildlife Service, Bureau of Land Management, and Bureau of Indian Education each at 5%. ■

Fall-protection violations top list of OSHA citations

Fiscal year 2019 saw OSHA issue approximately 27,000 citations with fall protection – general requirements as the category most often cited with 6,010 violations. It was followed by hazard communication with 3,671. Those were trailed in the top 10 by scaffolding, lockout/tagout, respiratory protection, ladders, powered industrial

trucks, fall-protection training requirements, machine guarding as well as PPE – eye and face protection.

A penalty can exceed \$13,000 per violation with additional per-day penalties for every day the issue has not been fixed to OSHA's standards. The fine for willful and repeated violations can be more than \$130,000. ■



ROLAND MACHINERY CO.

DOOSAN®

Now available at all Roland Machinery Co. locations

Bridgeton, MO (314) 291-1330	Columbia, MO (573) 814-0083	Bolingbrook, IL (630) 739-7474	Carterville, IL (618) 985-3399	Marengo, IL (815) 923-4966	DePere, WI (920) 532-0165	Eau Claire, WI (715) 874-5400	Slinger, WI (262) 644-7500
Palmyra, MO (573) 769-2056	Springfield, IL (217) 789-7711	East Peoria, IL (309) 694-3764	Portage, IN (219) 764-8080	DeForest, WI (608) 842-4151	Franksville, WI (262) 835-2710	Schofield, WI (715) 355-9898	
Cape Girardeau, MO (573) 334-5252						Escanaba, MI (906) 786-6920	

www.rolandmachinery.com

Customers reach milestone with Autonomous Haulage System that saves millions and drives toward zero harm

Marking another industry first, mining companies have now moved more than 3 billion metric tons of material with Komatsu's Front Runner Autonomous Haulage System (AHS) that features driverless trucks.

Working closely with its customers, Komatsu teams developed the first commercially available AHS to help mines move material more efficiently. First deployed in 2008 at CODELCO's Gabriela Mistral (Gaby) copper mine in Chile, AHS brings together some of the world's best-selling, ultra-class dump trucks with Modular Mining Systems' (a Komatsu-owned company) DISPATCH Fleet Management System.

Today's Front Runner system is in operation around the clock, hauling copper, iron ore, oil sands and coal at 11 customer sites across three continents. At the end of June 2020, 251 trucks were in operation, with an additional 100 (mainly from installing AHS retrofit kits) planned to deploy during the next year.

"Our mining customers' ongoing investment in technology and equipment to transition to autonomous haulage underscores the value

the system provides," said Toshio Kurokawa, General Manager of Marketing Department, Mining Business Division, Komatsu. "We are gratified to have helped customers save hundreds of millions of dollars while autonomously moving another billion metric tons of essential minerals and driving for zero harm. We are also honored that autonomous haulage has been a valuable resource to help our customers mitigate risks associated with the global COVID-19 pandemic."

Designed to work with non-autonomous equipment

The Front Runner system enables manually operated equipment, such as loaders, dozers, graders, light vehicles and more, to seamlessly interact in an autonomous truck environment. Komatsu recently introduced system functionality to allow manual haul trucks to also operate with the autonomous trucks. To further support the growth of autonomous mining equipment for its customers, Komatsu is leading initiatives to develop standards for interoperability between Komatsu and non-Komatsu autonomous vehicles. ■

An Autonomous Haulage System (AHS) truck is loaded with a Komatsu hydraulic excavator at Komatsu's Arizona Proving Grounds. Customers using AHS recently surpassed 3 billion metric tons of material moved since the first AHS deployment in 2008.



Operating machinery is life-long dream for Wyat Larson; working with equipment is his passion



Wyat Larson,
Operator

“Being an operator is something I take great pride in, and I encourage others to at least check it out.”

Wyat Larson was born to run equipment. He grew up around an excavation company and has been operating dozers, excavators and wheel loaders for a good portion of his life.

“It’s a family heritage,” he shared. “I have been doing this almost since I was in diapers. My dad and my uncles have operated for a long time, and it’s nice to step into their shoes and continue the legacy. I always wanted to do it.”

Most of his acquaintances and friends don’t share his passion, he said.

“I know of only a few who are into operating equipment,” said Larson. “It seems like there are a lot of people who don’t have the work ethic it takes to do this job. Fortunately, I was lucky enough to be raised in the industry and saw it first-hand. Being an operator is something I take great pride in, and I encourage others to at least check it out.”

Enjoys the challenges, working outdoors

In addition to following in the footsteps of various family members, Larson likes the wide range of projects that are associated with running equipment for an excavation-related company.

“People think it’s just doing the same thing over and over again, but no two days are ever exactly the same,” he pointed out. “We run into different materials, and you have to understand how to move each and what’s the best machine for getting the job done. It can be challenging at times, but that’s what makes it so enjoyable.”

Larson also appreciates spending his work hours in the elements, although nearly every machine he runs has a climate-controlled cab.

“It definitely beats sitting in an office all day,” he exclaimed. “Today’s equipment is more comfortable with air conditioning and heat, and it’s fairly easy to operate with joystick controls. Running equipment is my favorite thing to do.” ■

Operator Wyat Larson grew up in the excavation industry and enjoys working out in nature. “It definitely beats sitting in an office all day,” he exclaimed. “Today’s equipment is more comfortable with air conditioning and heat, and it’s fairly easy to operate with joystick controls. Running equipment is my favorite thing to do.”



PERFECT STRIKING FORCE EVERY TIME.

Montabert breakers sense the hardness of material, adapting their power and strike frequency to deliver just the right amount of energy. You get the best possible performance every time, without all the wear and tear.

See our attachments in action!
MontabertUSA.com



Follow us on social media for regular updates from **Montabert!**

40 Pennwood Place Suite 100
Warrendale, PA 15086
ussales@montabert.com
866-472-4373

Montabert and the Montabert logo are registered trademarks of Montabert S.A.S. in the United States and various countries around the world.



ILLINOIS

Springfield • 217-789-7711
Bolingbrook • 630-739-7474
Carterville • 618-985-3399
East Peoria • 309-694-3764
Marengo • 815-923-4966

INDIANA

Portage • 219-764-8080

MICHIGAN

Escanaba • 906-786-6920

MISSOURI

Bridgeton • 314-291-1330
Cape Girardeau • 573-334-5252
Columbia • 573-814-0083
Palmyra • 573-769-2056

WISCONSIN

DeForest • 608-842-4151
De Pere • 920-532-0165
Eau Claire • 715-874-5400
Franksville • 262-835-2710
Schofield • 715-355-9898
Slinger • 262-644-7500

MONTABERT®



Engineering Innovation since 1921



Director, National Accounts Tom Suess says every customer, regardless of size, deserves the best Komatsu has to offer



This is one of a series of articles based on interviews with key people at Komatsu discussing the company's commitment to its customers, and their vision for the future.

Tom Suess,
Komatsu Director, National Accounts

Tom Suess, Director, National Accounts, rejoined the national account team in 2017 after spending two years leading the Cartersville Customer center as the Director of Training and Publications.

"Although I immensely enjoyed my time meeting with people from across the country while in Georgia, I was excited to get back on the sales side and work with national account customers on a daily basis," said Suess.

Suess began his career with Komatsu in the finance division more than 20 years ago after graduating from Illinois State University. He later went on to obtain a master's degree in business administration from the University of Phoenix.

After working in finance, Suess transitioned into sales and served as a District Sales Manager, then as a Regional Sales Manager before earning a promotion to Director of Business Planning and Development. Suess later advanced to Director of the West Region before moving to a National Account Manager role. His diverse background allowed him to easily transition back into national accounts in a leadership position.

He and his wife, Erin, recently celebrated their 18th wedding anniversary. They have three children: Addison (14), Avery (11) and Jack (4). In addition to spending time with his family, Suess also likes to golf, fish, play basketball and is a die-hard Cubs fan. ■

QUESTION: What are the benefits of national accounts to all customers?

ANSWER: National account customers operate in multi-states and have large fleets. These customers may work under different names depending upon the state. Komatsu national accounts focus on the following four segments: aggregate/quarry, waste, construction and energy. The product support business associated with servicing these large fleets provides certainty for Komatsu, our dealers and our customers from a planning perspective. This allows us to forecast what is needed from a parts standpoint so that we can keep all customers' uptime maximized. At all levels of size, Komatsu and our dealers are looking for long-term partners that we can grow and improve with, focusing on our collective success.

QUESTION: In what ways are you working toward collective success?

ANSWER: All customers want quality products and excellent product support. We believe across the board, Komatsu delivers. We have some of the most innovative and technologically advanced machinery in today's marketplace. And, we back it with solutions that are proven to increase uptime, utilization, production and efficiency.

For example, we recently engaged with a large national aggregate company and completed a fleet analysis through our Business Solutions Group in order to provide recommendations on whether they should replace or rebuild key production units. We focused on what would save the customer the most money in the future, and we provided this service at no charge. This consultative style provides customers with valuable information, and we believe it differentiates Komatsu from competitors by developing a long-term relationship, not a transactional one.

Similar studies have been done with a variety of customers, some with just a couple of machines. In one instance, the study proved that it would be most beneficial for this customer to have less equipment and of a smaller size than they originally planned for. It increased their production for less than they planned to spend. In fact, they saved so much, they were able to buy additional machinery.



Tom Suess, Komatsu Director, National Accounts, says every business is looking for the same from Komatsu and its distributors: component longevity, innovation and ease of doing business.

In other instances, we have shown quarries how to maximize production by changing practices or the types of equipment they use. Our Business Solutions Group has numerous instances such as this, and again, it's complimentary no matter what size or type of operation. We encourage anyone who wants to be more efficient, productive and cost-effective to contact their distributor and/or sales rep to set up an analysis.

QUESTION: So, customer service is no different for any account?

ANSWER: It certainly should not be. Every business is looking for the same from our distributors and us: component longevity, innovation and ease of doing business. Each point is critical to their success, our dealers' success and our success. Komatsu has long been a leader in trailblazing technology that enhances performance and lowers total cost of ownership to all customers. Our dealers are playing a big role in that with industry experts in areas such as Smart Construction, which looks at the total job site picture, from surveying, estimating and bidding to completion, all with greater efficiency. Everyone benefits from innovations like this. The contractor with one machine can get more jobs done by using Smart Construction and an intelligent machine because it's reducing time in staking, grading, digging and more. He can also keep track of his machine's performance and production with technology such as Komtrax, and with Komatsu Care our distributors also track it and stay on top of scheduled maintenance.

Of course, that same equipment and technology is available to larger customers with bigger



Direct, customer-facing interaction helps develop a deep understanding of customer needs and facilitates strong working relationships, according to Tom Suess, Komatsu Director, National Accounts. "All customers want quality products and excellent product support. We believe across the board, Komatsu delivers," said Suess.

fleets. In the mining industry, we have Komtrax Plus, which is the same platform with some additional items geared directly toward those customers.

No matter the size of the operation, we have the tools and support to meet their needs. Across the board, we adhere to these guiding principles:

- Direct customer-facing interaction
- Develop a deep understanding of customer needs
- Facilitate a strong working relationship
- Direct and coordinate Komatsu activities to grow. ■

KOMATSU®

WORKS FOR ME™



“BUILDING FOR THE FUTURE.”

THREE GENERATIONS.

“At Selge Construction, we’re a family business. My son-in-law and even grandson are involved and interested in this great occupation. I’ve built a good name in our marketplace with a reputation for quality work and integrity in the way we do business. And I choose Komatsu because they match my values. Their excavators help my crews and family carry on our goals: to provide the best job for an honest price. It’s these and many other reasons why Komatsu works for us!”

Marv Selge (with Noah & Justin) / Selge Construction, Inc. / Niles, MI

KOMATSU®

THAT'S WHY I AM KOMATSU

komatsuamerica.com



FAST Act funding extended a full year as part of short-term continuing resolution to avert government shutdown

The FAST (Fixing America's Surface Transportation) Act, the current surface transportation bill, received a one-year extension as part of a continuing resolution (CR) passed by Congress and signed by the President in September. The FAST Act was set to expire at the end of that month.

The FAST Act extension includes \$13.6 billion to maintain the Highway Trust Fund's solvency at current funding levels through fiscal year 2021. Of the total, \$10.4 billion would go to the fund's highway account with the transit account set to receive \$3.2 billion.

"A full one-year extension of highway funding provides states and communities the certainty required to plan for critical road and bridge projects," said Senate Environment and Public Works Committee Chairman John Barrasso (R-Wyo.) in a statement following the legislation's passage.

The FAST Act was signed into law in 2015. It was the first federal law in more than a decade to provide long-term funding for surface transportation. It authorized \$305 billion from fiscal year 2016 to fiscal year 2020.

Pleased, but wanting more

Industry groups seemed generally happy with the full-year extension as part of

a short-term CR to finance the federal government for 72 days. Money for the extension comes from the general fund.

"We are pleased that Congress approved the \$13.6-billion transfer to the Highway Trust Fund and that states will have certainty for planning their 2021 programs, knowing that current surface transportation legislation remains in place for another year," said Jim Tymon, Executive Director of American Association of State Highway and Transportation Officials in a statement.

Many were hoping for a longer-term solution.

"While a one-year extension of the FAST Act isn't the multi-year surface transportation bill the equipment industry was hoping for, in the current political environment, it's a win," said AED President & CEO Brian P. McGuire. "AED members from across the country participated in our unprecedented grassroots campaign, and Congress' action demonstrates the effort's success. Lawmakers heard loud and clear that short-term doesn't work when it comes to the Highway Trust Fund, and the industry needed a longer-term solution with additional funding to ensure critical road and bridge projects continue well into next year." ■

Congress passed and the President signed a continuing resolution that includes a full-year extension of the FAST Act, the current surface transportation bill. It approves \$13.6 billion for the Highway Trust Fund.



KOMATSU®

WORKS FOR ME™

**"FAILURE IS NOT
AN OPTION IN THE
JUNGLE."**

THE MOST RELIABLE.

"At D. Grimm, Inc., we handle construction projects across the USA that keep our crews and equipment constantly on the edge. And it's my reputation that's on the line, so I choose Komatsu over all other brands because they've proved that they're the most reliable. If you need exceptional construction equipment, and a company that will work hard for you, I recommend Komatsu!"

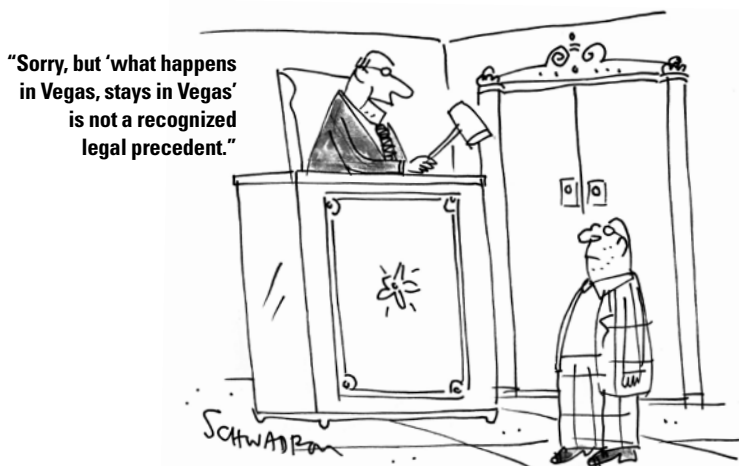
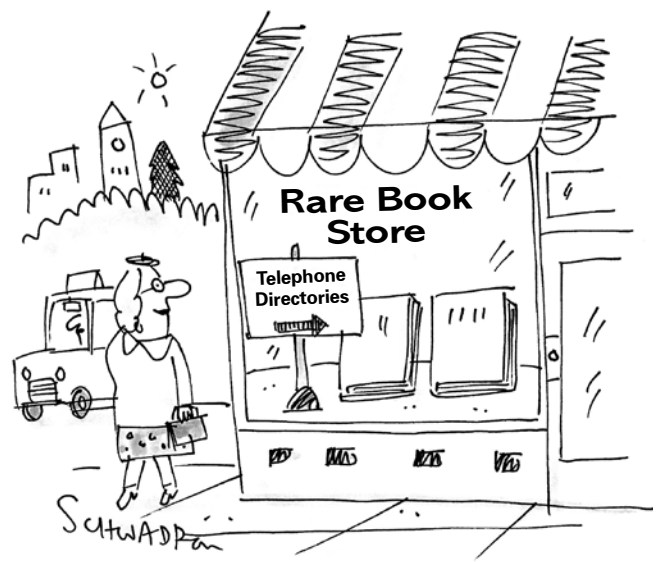
Dawn Mallard / D.Grimm, Inc. / Conroe, TX

KOMATSU®

THAT'S WHY I AM KOMATSU

komatsuamerica.com

On the light side



Did you know?

- There's a rare breed of chicken called Ayam Cemani that's completely black.
- Apollo 17 astronaut Gene Cernan, the last man to walk on the Moon, wrote his daughter's initials there. They'll last at least 50,000 years.
- Charles Kirby designed an improved fishing hook in 1655 that remains relatively unchanged to this day.
- Worrying too much is scientifically associated with higher intelligence. People who over-think tend to have higher IQs.
- Taking a nap after learning something can help your retention of it.
- The world's largest swimming pool is at a resort in Chile; it's 3,324 feet long.
- On average, cats sleep for two thirds of their lives.
- The TomTato is a plant that produces both potatoes and tomatoes.
- No one knows who invented the fire hydrant because its patent was burned in a fire.
- The Battle of Bunker Hill in June 1775 was actually fought on Breed's Hill, southeast of Bunker Hill.

Brain Teasers

Unscramble the letters to reveal some common construction-related words. Answers can be found in the online edition of the magazine at www.RolandIndustryScoop.com

1. LLEC _____
2. SBDEIR _____ B _____
3. EELLV _____ E _____
4. DORA _____
5. SETKA _____ K _____
5. RARUYQ _____ U _____

Need dirt? Want to sell some? There's an app for that

If you need dirt or have some to sell, Soil Connect can put you in touch with others who may help. The free app lets users see what soils are available and where they are located.

"You might have a national homebuilder from the Midwest who needs to get rid of one million yards of soil, and may only post one time for a year," said founder and CEO Cliff Fetner in an Engineering News-Record article, noting that the app has a variety of users. "Then you might have Tommy the pool

guy who moves (smaller amounts of) dirt every day."

Developed about three years ago, Soil Connect is now in version 2.0, with updated features such as geotechnical reports and soil analysis. Users can also receive text alerts notifying them of available dirt or potential buyers who are interested in their soil. Fetner is working on 3.0, which will include digitized manifests for the truckers hauling material and the entire ticketing process. ■

Study: buffs, gaiters may be worse than no masks

A Duke University study shows that the face coverings known as buffs or gaiters are ineffective against COVID 19 and may worsen the spread. It showed wearing no mask may be better than wearing the popular thin fabric masks, which are worn around the neck and pulled up over the mouth and nose.

"We noticed that speaking through some masks (particularly the neck fleece) seemed to

disperse the largest droplets into a multitude of smaller droplets, which explains the apparent increase in droplet count relative to no mask in this case," noted researchers in the journal Science Advances. "Considering that smaller particles are airborne longer than large droplets (larger droplets sink faster), the use of such as a mask might be counterproductive." ■

CARES Act provides \$25 billion for transportation

Road funding got a boost with the United States Department of Transportation providing \$25 billion for transportation systems. The money came from the Coronavirus Aid, Relief, and Economic Security (CARES) Act, providing grants to recipients of urbanized area and rural area formula funds and are to be spent on capital, operating and other expenses.

The grants may also be used for maintaining transit services. Urban areas will be allocated \$22.7 billion, with rural areas receiving \$2.2 billion.

"This historic funding will ensure our nation's public transportation systems can continue to provide services to the millions of Americans who depend on them," said U.S. Transportation Secretary Elaine Chao. ■

Wastewater studies help track COVID-19

Biobot, a Boston-based firm that specializes in data analytics for wastewater is working with about 400 facilities across the United States, along with public health officials, to monitor and track COVID-19. Biobot said in a recent Engineering News-Record article that collecting information from sewage will enable communities to measure the scope of an outbreak, independent of patient testing or hospital reporting.

It says tracking wastewater can help in making predictions about public health trends, such as whether COVID-19 is likely to spread or decrease in specific communities and counties. In the same article, an engineer reported that studies show wastewater treatment processes are effective in eradicating viruses and bacteria that are even stronger in their molecular structure than coronaviruses. ■

Quality Used Equipment... with support to back it up

Financing Available for Qualified Buyers



2017 KOMATSU 845 \$339,500
STK# VT20014, 2,200 HRS, EAU CLAIRE, WI



2012 KOMATSU D51PX-22 \$124,500
STK# KM17574, 3,379 HRS, DEFOREST, WI



2015 KOMATSU 931.1 \$275,000
STK# VT19025, 7,957 HRS, ESCANABA, MI



2017 KOMATSU PC210LC-11 \$149,500
STK# KM19698, 2,879 HRS, EAST PEORIA, IL



2016 KOMATSU D61PX-24 \$189,500
STK# KM19412, 3,103 HRS, CAPE GIRARDEAU, MO



2015 WIRTGEN W220 \$CALL
STK# WG19010, 3,964 HRS, SPRINGFIELD, IL



2015 CAT 501HD \$210,000
STK# CT20002, 5,743 HRS, DEPERE, WI



2014 WIRTGEN W210I \$179,500
STK# WG20052, 5,863 HRS, SPRINGFIELD, IL



2017 KOMATSU PC390LC-11 \$274,500
STK# KM19044, 2,251 HRS, SPRINGFIELD, IL



2016 KOMATSU D51PXI-22 \$179,500
STK# KM19657, 3,884 HRS, DEPERE, WI



2006 VALMET 840.3 \$85,000
STK# VT20015, 19,000 HRS, ESCANABA, MI



2018 WIRTGEN W120CFI \$429,500
STK# WG20036, 724 HRS, MARENGO, IL



2018 KOMATSU PC210LC-11 \$179,500
STK# KM20049, 692 HOURS, DEFOREST, WI



2017 KOMATSU WA380-8 \$219,500
STK# KM19470, 1,219 HRS, BOLINGBROOK, IL



2017 KOMATSU WA320-8 \$159,500
STK# KM19425, 1,056 HRS, SPRINGFIELD, IL



2016 KOMATSU PC138USLC-11 \$119,500
STK# KM19402, 2,360 HRS, SPRINGFIELD, IL

KOMATSU®



KOMATSU
REMARKETING

17 Roland branch locations in IL, IN, MI, MO and WI

Used Sales (217) 789-7711 • www.RolandMachinery.com

ROLAND
MACHINERY CO.

www.rolandmachinery.com



The Products The Support The Service

Springfield, IL
(217) 789-7711

Bolingbrook, IL
(630) 739-7474

Carterville, IL
(618) 985-3399

East Peoria, IL
(309) 694-3764

Marengo, IL
(815) 923-4966

Portage, IN
(219) 764-8080

Escanaba, MI
(906) 786-6920

Bridgeton, MO
(314) 291-1330

Cape Girardeau, MO
(573) 334-5252

Columbia, MO
(573) 814-0083

Palmyra, MO
(573) 769-2056

DeForest, WI
(608) 842-4151

De Pere, WI
(920) 532-0165

Eau Claire, WI
(715) 874-5400

Franksville, WI
(262) 835-2710

Schofield, WI
(715) 355-9898

Slinger, WI
(262) 644-7500

KOMATSU®

KOMATSU | Forestry Quality™



WIRTGEN GROUP



WIRTGEN



KLEEMANN



VÖGELE



HAMM

LeeBoy

Rosco
Leading

DOOSAN

SENNEBOGEN